

● EQUINE



CAMEL ●

We care for Animal Health & Wellness



Why Choose Us:

At Phoenix Healthcare Group, we understand your relentless pursuit of quality products and services to cater to the evolving needs of your customers. As your reliable partner, we offer a comprehensive portfolio adhering to industry standards.

Why we stand out:

Diverse Portfolio: With direct associations with leading manufacturers across India and globally, Phoenix Healthcare Group offers a unique range of single and multipurpose hospital disposables and surgical consumables, ensuring comprehensive medical solutions.

Expanding Horizons: We are not limited to medical device and surgical disposables. Phoenix Healthcare Group has been actively involved in the distribution of animal feed, supplements, veterinary needs, nutraceuticals, and disinfectants. We cater to the following sector Bovine, Caprine, Ovine, Canine, Feline, Equine, Camel, Poultry, Aquaculture, Apiculture.

Global Reach: We are committed to expanding our product lines worldwide and establishing fruitful partnerships with distributors, channel partners, and stakeholders in respective territories. Our unwavering commitment enables us to not only meet but exceed customer expectations.

Who We Are:

Established in 1998 officially at Abu Dhabi, United Arab Emirates, Phoenix Healthcare Group initially began as a distribution house with import and export activities. Over the past two decades, we've diversified and carved a niche for ourselves in the distribution of: Orthopaedic Surgical devices & disposables / hospital consumables / Animal feed & supplements, Veterinary surgical supplies / Veterinary Medicines / veterinary Diagnostics Elisa & Rapid kits / Speciality Disinfectants for farms / Insecticides for farms and Public Health / Veterinary accessories / Poultry farm specialities.

Our journey has been characterized by continuous growth and adaptation. Today we are a multi-national operators Equipped with a robust infrastructure and a well-established sales and marketing distribution network, we've embraced a culture of dedication and optimism in serving our clientele. At Phoenix Healthcare Group, we remain committed to meeting and exceeding customer needs with every endeavour.

CAMEL

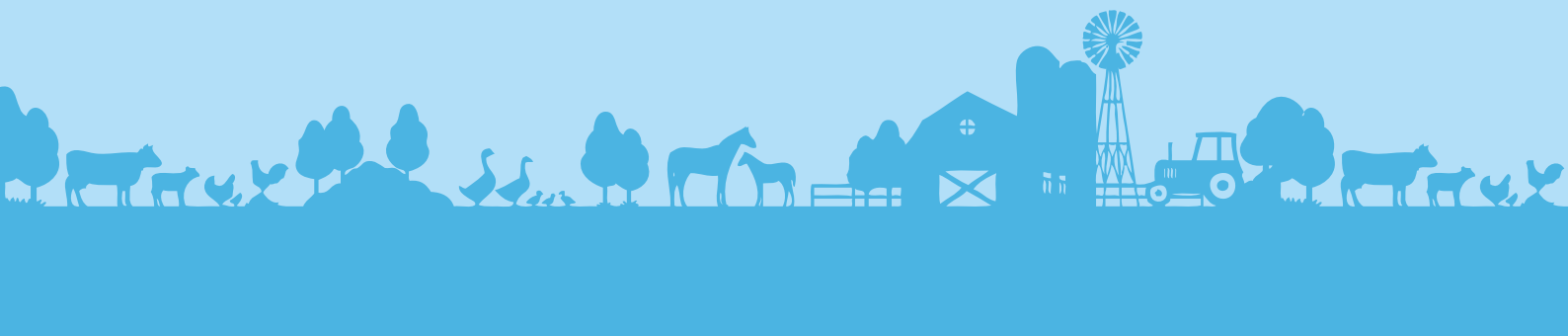
Care Management



Caring for camels involves addressing various aspects to ensure their health, welfare, and well-being. Here are some of the most important aspects of camel care:

- 1. Shelter and Housing:** Provide adequate shelter to protect camels from extreme weather conditions such as heat, cold, wind, and rain. Shelter should be well-ventilated, spacious, and free from sharp objects or potential hazards.
- 2. Nutrition and Feeding:** Ensure camels have access to clean water at all times, as they can tolerate long periods without drinking. Provide a balanced diet consisting of high-fiber forage, such as grasses and roughage, supplemented with grains, minerals, and vitamins as needed. Monitor feed quality and quantity to prevent nutritional deficiencies or imbalances.
- 3. Healthcare:** Implement a regular healthcare program that includes vaccinations, deworming, and routine health checks by a veterinarian. Monitor camels for signs of illness or injury and seek prompt veterinary attention when necessary. Trim hooves regularly to prevent overgrowth and foot problems.
- 4. Grooming and Hygiene:** Brush and groom camels regularly to remove dirt, debris, and loose hair from their coat. Pay special attention to areas prone to matting or skin irritation. Clean and inspect the eyes, ears, and nostrils for signs of infection or irritation.
- 5. Exercise and Enrichment:** Provide opportunities for camels to engage in natural behaviors such as walking, grazing, and socializing. Allow them access to outdoor pasture or paddock areas where they can roam and graze freely. Provide enrichment activities such as toys or scratching posts to keep them mentally stimulated and prevent boredom.
- 6. Handling and Training:** Handle camels gently and with respect, using positive reinforcement techniques to build trust and cooperation. Train camels to respond to basic commands and cues for activities such as haltering, leading, and loading onto trailers. Practice regular handling and desensitization exercises to accustom camels to common situations and stimuli.
- 7. Socialization:** Camels are social animals that thrive in group settings. Whenever possible, keep camels in compatible groups or pairs to fulfill their social needs and prevent loneliness or behavioral issues. Monitor group dynamics and intervene if aggressive or dominant behavior occurs.
- 8. Transportation:** When transporting camels, ensure they are adequately restrained and provided with sufficient space, ventilation, and bedding to ensure their comfort and safety. Monitor camels during transit for signs of stress, dehydration, or injury.
- 9. Environmental Considerations:** Consider the natural habitat and climate preferences of camels when designing their living environment. Provide shade and shelter from extreme temperatures, and ensure adequate ventilation to prevent heat stress or respiratory problems.

By addressing these important aspects of camel care, owners can ensure the health, welfare, and happiness of their camels and maintain a strong bond with these remarkable animals. Regular observation, attention to detail, and prompt intervention when needed are key to successful camel management.



EQUINE health and stable management

Equine health and stable management are crucial aspects of caring for horses and ensuring their well-being. Here are some key considerations for each:

EQUINE HEALTH:

1. Regular Veterinary Care: Schedule routine health check-ups with a qualified equine veterinarian. This includes vaccinations, dental exams, parasite control, and overall wellness assessments. Address any health concerns promptly to prevent them from escalating into more serious issues.

2. Nutrition: Provide a balanced diet tailored to the horse's age, breed, activity level, and health status. Offer high-quality forage (hay or pasture) along with appropriate concentrates, supplements, and fresh water. Monitor the horse's body condition score and adjust the diet as needed to maintain optimal weight and condition.

3. Dental Care: Schedule regular dental examinations and floating (rasping) of the horse's teeth to prevent dental problems such as sharp points, uneven wear, and dental malocclusions. Proper dental care ensures efficient chewing, digestion, and overall health.

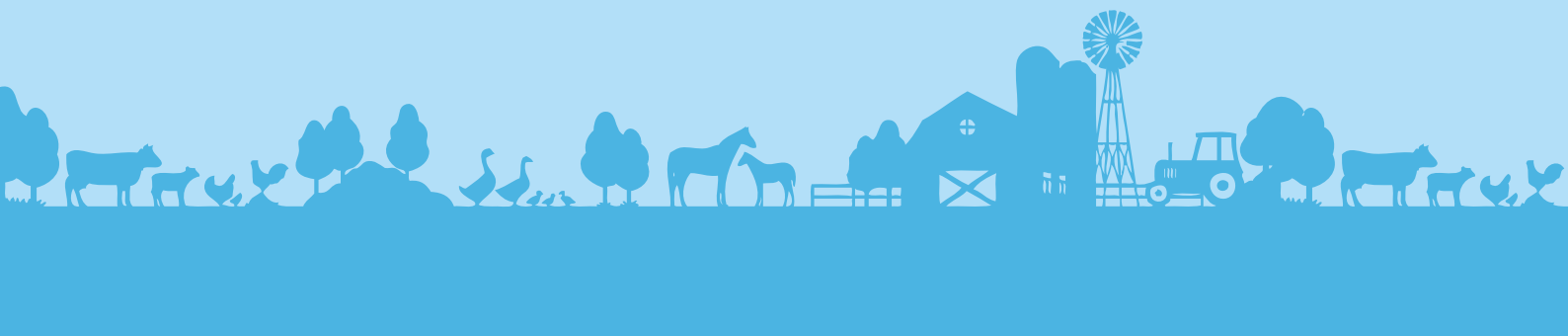
4. Hoof Care: Implement a regular hoof care regimen, including trimming, balancing, and shoeing as needed. Ensure the hooves are cleaned daily and inspected for signs of injury, infection, or hoof-related lameness. Provide adequate turnout on varied terrain to promote natural hoof wear and hoof health.

5. Exercise and Fitness: Design a balanced exercise program that includes a combination of turnout, riding, lunging, and other activities to keep the horse physically fit and mentally stimulated. Gradually increase intensity and duration of exercise to prevent injuries and promote overall fitness.

6. Environmental Management: Provide a clean, safe, and well-ventilated living environment for the horse. Maintain clean stalls, pastures, and water sources to minimize exposure to contaminants and pathogens. Implement parasite control measures, such as regular deworming and manure management, to reduce the risk of parasitic infections.

7. Emergency Preparedness: Have a comprehensive emergency plan in place for dealing with medical emergencies, natural disasters, and other unexpected situations. Keep essential supplies on hand, including first aid kits, emergency contact information, and evacuation plans.





STABLE MANAGEMENT:

1. Facility Maintenance: Regularly inspect and maintain stable facilities, including barns, stalls, fencing, and arenas. Repair any structural damage, address safety hazards, and ensure proper ventilation, lighting, and drainage.

2. Stall Management: Keep stalls clean, dry, and well-bedded to promote the horse's comfort and health. Provide ample space for the horse to lie down, stand, and move freely. Remove manure and soiled bedding regularly to minimize odors and reduce fly breeding.

3. Feeding and Watering: Establish a consistent feeding schedule and provide high-quality feed, hay, and water at regular intervals. Ensure feed storage areas are clean, dry, and free from contaminants to prevent spoilage and contamination.

4. Turnout: Allow horses ample turnout time in safe, well-fenced pastures or paddocks to graze, socialize, and exercise. Rotate pastures as needed to prevent overgrazing and maintain pasture health.

5. Tack and Equipment: Properly clean, inspect, and maintain tack and equipment to ensure safety and functionality. Replace worn or damaged equipment as needed and store tack in a clean, organized manner to prevent damage and deterioration.

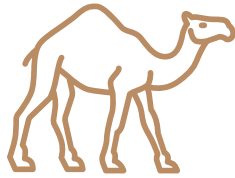
6. Staffing and Training: Hire knowledgeable and experienced staff or volunteers to assist with daily care and management tasks. Provide ongoing training and education to staff members to ensure proper handling, care, and safety protocols are followed.

7. Biosecurity: Implement biosecurity measures to prevent the spread of infectious diseases within the stable environment. This includes quarantining new arrivals, limiting contact between horses, and practicing good hygiene and sanitation practices.

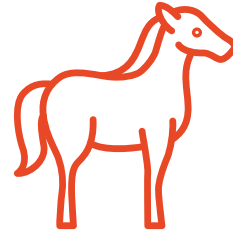
By prioritizing equine health and stable management, horse owners can create a safe, healthy, and enjoyable environment for their horses to thrive. Regular monitoring, proactive care, and attention to detail are essential for maintaining the well-being of horses and promoting their longevity and performance.



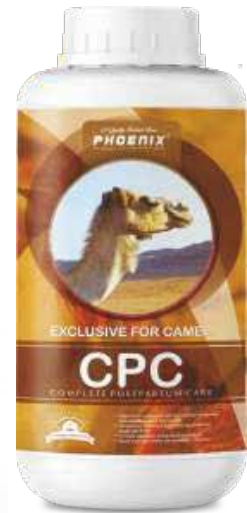
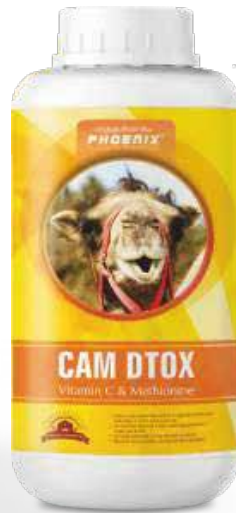
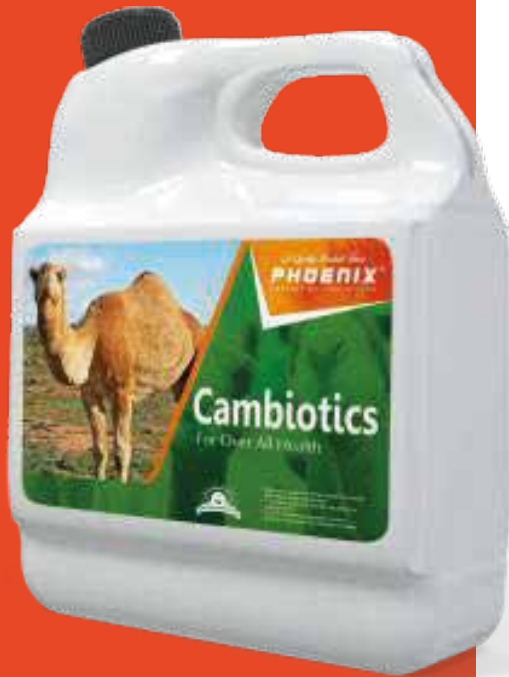
W e c a r e f o r A n i m a l H e a l t h & W e l l n e s s



Camel



Equine





Sea Biscuit

A premium and all time equine feed

Composition & Principle Ingredients

Natural and Pure Cereal Whole Grain Mix of Oats, Corn, Soyabean, Flax seed, Beet Root, Psyllium Husk, Flaxseed Oil, Rice Bran Oil, Peanuts, Peas, Molasses & Sunflower Seeds etc.

Analysis & Energy Estimation Statemen

Total ME : 4300 K Cal/Kg
 Or Total DE > 3600 K Cal/Kg
 BW. @ 33 K Cal
 Per Kg Metabolic Body Weight
 Usage – 1 Kg For 100 to 120 kg BW

Crude Protein (Min) – 18 – 20%
 Lysine(Min) - 18 – 19 gm/Kg
 DL Methionine (Min) – 5 – 6 gm/Kg
 Threonine (Min) – 7 to 7.5 gm/Kg

Crude fat / EE- 7.8 % - 70 to 80 gm/Kg
 Omega 6 Fatty Acid – 16 – 18 gm/Kg
 Omega 3 Fatty Acid – 38 – 40 gm/Kg

Total Carb. – 67 to 68%
 Crude Fiber Max – 6 -7 %

Calcium (Ca) (Min.) – 30-32 gm/Kg
 Phosphorous (P) (Min.) – 18-20 gm/Kg
 Salt (NaCl) (Min.) – 10 gm/Kg
 Magnesium (Mg) (Min.) – 6 gm/Kg
 Potassium (K) (Min.) – 1.5%
 Copper (Cu) (Min.) – 50 ppm
 Selenium (Se) (Min.) – 0.6 ppm
 Zinc (Zn) (Min.) – 160 ppm
 Iron (Fe) (Min.) – 900 ppm
 Manganese (Mn) (Min.) – 240 ppm
 Iodine (I) (Min.) – 4 ppm
 Cobalt (Co) (Min.) – 4 ppm

Dosage: Daily – 2 to 4 Kg Upto 500 Kg Body Weight
 Packing – 15/25/40 kg Paper HDPE Bag
 4 to 6 mm Pellets
 Shelf Life: 6 Months From The Date of Mfg.

Vitamin A (P) (Min.) – 20000 IU/Kg
 Vitamin D (P) (Min.) – 2000 IU/Kg
 Vitamin E (P) (Min.) – 400 Mg/Kg
 Vitamin B1 Thiamine(P) (Min.) – 75 Mg/Kg
 Vitamin B2 Riboflavin(P) (Min.) – 54 Mg/Kg
 Vitamin B3 Niacin (P) (Min.) – 150 Mg/Kg
 Vitamin B5 D Calcium Pantothenate (P) (Min.) – 60 Mg/Kg
 Vitamin B6 Pyridoxine HCl (P) (Min.) – 30 Mg/Kg
 Vitamin B12 Cynocobalamin (P) (Min.) – 0.08 Mg/Kg
 Folic Acid (P) (Min.) – 54 Mg/Kg
 Biotin (P) (Min.) – 2.4 Mg/Kg
 Cholin Chloride (P) (Min.) – 900 Mg/Kg
 Vitamin C Ascorbic Acid (P) (Min.) – 900 Mg/Kg

Total Direct Fed Microorganisms – 150 Mil CFU/Kg
 Saccharomyces Cerevisiae – 10 Mil CFU/Kg
 Lactobacillus Acidophilus - 25 Mil CFU/Kg
 Bacillus Subtilis - 25 Mil CFU/Kg
 Aspergillus Oryzae - 25 Mil CFU/Kg
 Aspergillus Niger - 25 Mil CFU/Kg
 Fructo oligosaccharide(FOS) - 5 Mil CFU/Kg

Enzymes Units Complex – 400 mg/Kg
 (Cellulase, Proteases, Lipase, Hemicellulase, Phytase)



FOAL BOOSTER

Nutritional Tonic for Foal Growth

Composition :

Each ltr. contains:

Vitamin A	: 700000 IU
Vitamin D	: 105000IU
Vitamin E	: 9800 IU
Vitamin C	: 14000 mg
Folic Acid	: 560 mg
Biotin	: 22400 µg
Vitamin B1	: 1120 mg
Vitamin B2	: 420 mg
Vitamin B6	: 420 mg
Vitamin B12	: 2100 µg
Calcium-D	
Pantothenate	: 2100 mg
Prebiotics	: Q.S.
Yeast	: Q.S.

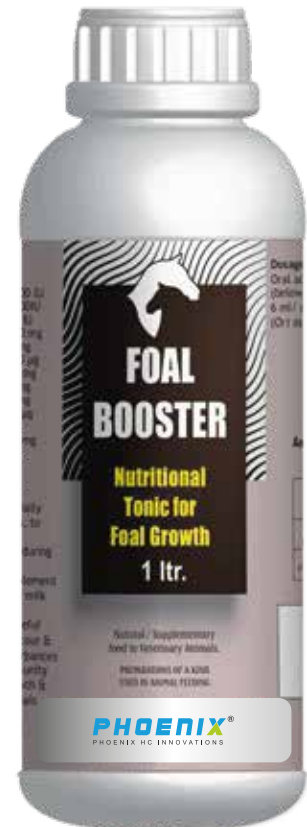
Benefits :

- Nutritional tonic specially prepared for the foals, to achieve rapid growth
- Highly recommended during the stress time
- Can be used as a supplement to complement mares milk
- Prebiotic & probiotic supplementation is useful during times of foal scour & during digestive disturbances
- Helps to improve immunity
- Helps to improve growth & body weight gain in foals.

Dosage :

Oral administration Foals
(below 200 kg body weight) : 6 ml/ animal
(Or) as advised by a Veterinarian

Presentation: 1 ltr. & 5 ltr.



BONETEND SUPER

Mineral Supplement Formulated for Horses at stud

Composition: (each kg contains) :

Vitamin A	: 500,000 IU
Vitamin D	: 100,000 IU
Calcium	: 30,000 mg
Vitamin E	: 2500 mg
Phosphorus	: 12,000 mg
Copper	: 350 mg
Zinc	: 1250 mg
Inositol	: 85 mg
Cobalt	: 10 mg
Folic acid	: 200 mg
Excipient	: Q.S.
BONETEND super	: Mineral Supplement for Horses.

Dosage:

Pregnant mares: 60-120 gm daily.
Lactating mares: 60-150 gm daily.
Dry mares: 60-90 gm daily.
Stallions: 60-90 gm daily.
Foals (creep fed): 15-45 gm daily.
Weanlings: 60-120 gm daily.
Yearlings: 90-120 gm daily.
(or) as advised by a veterinarian (or) equine specialist, depending upon animals requirement.

Presentation: 20 kg.

Benefits:

- "BONETEND super" provides all essential minerals require for healthy bone growth and development.
- "BONETEND super" provides essential co-factors, Vitamins A & D and folic acid for bone development.
- "BONETEND super" specifically formulated for horses at stud and paddocked horses.
- "BONETEND super" is useful & very Safe for pregnant mares, lactating mares, stallions and foals.
- "BONETEND super" provides essential nutrition during early skeletal development for steady growth.
- "BONETEND super" is formulated to meet the specific needs of paddocked and stud horses of all ages.
- "BONETEND super" rectifies calcium and phosphorus deficiencies and incorrect ratios which negatively impact bone development and soundness. Ensures sound bone, tendon and ligament development and integrity.
- "BONETEND super" allows proper utilization and deposition of calcium and phosphorus in bone and for red blood cell production.
- "BONETEND super" is safely supplements and effectively balances vitamin and trace element deficiencies in pastured horses.



W e c a r e f o r A n i m a l H e a l t h & W e l l n e s s

BONE-CARE

Supplement To Improve Bones & Joints

Composition: Each Kg. contains:

Vitamin A : 600000 IU
Vitamin D3 : 120000 IU
Copper : 1000 mg
Zinc : 3000mg

Excipients (Calcium, Phosphorus & Marine collagen) : Q.S.

Benefits:

- It is a balanced nutritional supplement to improve skeletal strength
- Vitamin A helps to support collagen formation
- Vitamin D3 enhances calcium absorption
- Marine Collagen with key minerals helps to promote bone and joint development
- Highly useful to the young horses under training
- Highly recommended to young animals up to two years old

Dosage:

Oral administration through daily feed
In-Foal Mares (450-600 kg body weight) : 50 gm
Yearlings(200-350 kg body weight) : 30 gm
Foals(below 200 kg body weight) : 25 gm
Note: use strictly under veterinarian supervision

Presentation: 1 kg, 5 kg plastic container



JOINTER

For Healthy Bones & Joints

Composition:

Each ltr contains:

Boswellia Serrata extract	: 2000 mg
Capsicum extract	: 2000 mg
Piper nigrum extract	: 2000 mg
Ricinus communis extract	: 2000 mg
Samcarpus anacardium extract	: 2000 mg
Harpagophytum(devil claw) extract	: 5000 mg
Cissus Quadangularis extract	: 5000 mg
Excipients	: Q.S.

Benefits:

- It contains all natural herbs having the properties of bone health care, which helps to strengthen the bones, joints & skeleton structure of the horse.
- Acts as a supportive therapy in arthritis & fracture cases to achieve rapid recovery.
- Helps to strengthen the skeletal structure in foals or growing horses.
- Highly recommended during training/racing period.

Dosage:

Horses (adult) : 20 ml/animal daily for 5 days.

Foals & small horses : 10 ml/animal for 5 days.

(or) as advised by an equine specialist.

Presentation: 5 ltrs.





HOOF STRONG

For Stronger & To Strengthen Hoof

Composition: (each kg contains)

Calcium	: 50,000 mg
Phosphorus	: 20,000 mg
Biotin	: 500 mg
Gelatin	: 60 mg
Sulphur	: 155 mg
Methionine	: 250,000 mg
Choline chloride	: 6500 mg
Zinc	: 2000 mg
Magnesium	: 2000 mg
Excipients	: Q.S.

Benefits:

- "HOOF STRONG" Provides high level of Biotin together with other essential ingredients which are needed to promote Hoof growth & Repair.
- HOOF STRONG is a Supplement for Improves strength of hoof.
- HOOF STRONG regenerates normal hoof wall growth. Allows cracks & defects of the hoof to repair & grow out.
- It Provides proper combination of zinc, methionine, sulphur, choline, magnesium and gelatin for optimum hoof wall growth.
- Reduces tender soles and dry, brittle walls & Promotes stronger, healthier hoof and sole wall.
- Ensures the water soluble B-Group vitamin, Biotin is replenished daily facilitating optimal available levels, which is essential for Hoof strengthen.
- HOOF STRONG useful to treat hoof associated defects such as cracked wall, contracted heels, thin soles, bruised soles, seedy toe, split frogs, laminitis & dry shelly feet etc.
- HOOFSTRONG For Stronger & To Strengthen Hoof

Guideline for Use:

Mix "HOOF STRONG" thoroughly through a dry feed daily.

Important Note:

Overall improvement in hoof horn growth and strength generally occurs within 3-5 months. In cases of severe hoof damage and with very large horses, supplementation should continue for 9-12 months or longer.

Dosage:

Routine use: 15 gm daily.

Specific use: 30 gm daily.

Pregnant mares: 60 gm daily (last trimester)

Presentation: 20 kg



IRONAL

Iron with Folic Acid to Improve /
Corrects Blood Function

Composition: (Each 1 litre contains):
Ferric Ammonium Citrate : 15,000 mg
Folic acid : 280 mg
Cyanocobalmin : 200 mcg
Zinc Sulphate : 50 mg
Excipients : Q.S.

Benefits:

- **IRONAL** contains highly bio-available iron and folic acid suitable for oral administration or daily supplementation to feed.
- **IRONAL** Supplies organic iron as Ferric ammonium citrate.
- **IRONAL** provides concentrated folic acid. Maintains optimal iron levels in high performance horses, mare blood and mare milk.
- Maintains optimal red blood cell counts.
- Provides essential elements for haemoglobin production and therefore blood oxygenation.

Guidelines for Use:

Administer orally over the tongue or place liquid on dry feed.

Dosage:

Training Horse: 30 ml daily.

Pregnant and lactating mares: 30 ml daily.

Foals and weanlings: 15 ml daily.
(or) as advised by a veterinarian.

Presentation: 5 Ltr.



MUSCLE CARE

Vitamin E Anti-Oxidant Supplement for Peak Muscle Performance & Maximum Reproduction

Composition:

(Each Kg contains):

Vitamin E (alpha tocopherol acetate)	: 50,000 mg
Vitamin B1 (thiamine)	: 1000 mg
Selenium	: 100 mg
Sodium bicarbonate	: 50,000 mg
Choline chloride	: 100,000 mg
Excipients	: Q.S.

Benefits:

- MUSCLE care specially formulated to protect performance horses from muscle damage which can lead to soreness, stiffness, fatigue & in severe cases “tying-up”.
- Provides highly concentrated, highly bio-available Vitamin E.
- MUSCLE care Helps to relieve stresses of training and helps to prevent ‘training off’.
- MUSCLE care have potent anti-oxidant activity.
- MUSCLE care improves immunity & Fertility.
- MUSCLE care protects red blood cell integrity and reduces exercise induced muscle damage.
- MUSCLE care reduces muscle recovery time following strenuous (hard) exercise.

Dosage:

Working Horse: 15-30g daily.

Stallions at stud: 15-60g daily;

Pregnant mares: 15-60g daily;

Spelling horses/yearlings: 15g daily;

Horses with muscle problems such as ‘tying up’: 30-60g daily (or) as advised by a veterinarian (or) equine specialist.



Presentation: 10 kg.





PROTIMAX

Rich Protein Supplement

Composition:

(Each Kg contains):

Digestible Energy	: 4540 Kilo calories.
Protein Hydrolysate	: 300,000 mg
Lysine(50%)	: 30,200 mg
Methionine	: 22,000 mg
Calcium	: 7000 mg
Phosphorus	: 3500 mg
Magnesium	: 1250 mg
Potassium	: 8500 mg
Sodium	: 400 mg
Sulfur	: 6200 mg
Iron	: 140 mg
Zinc	: 24 mg
Copper	: 7.5 mg
Manganese	: 35 mg
Excipients	: Q. S.

Protimax is a Protein Concentrate & mineral supplement for horses.

Dosage:

300-600g daily added into ration.
(or) as advised by a veterinarian (or)
equine specialist.

Presentation: 20 kg.

Benefits:

- Protimax is a concentrated source of essential amino acids required daily in the normal diet of horses.
- Protimax helps in development of Bones, Bone tissues & Tendons.
- Protimax increases digestibility and increases bioavailability and enhances protein utilization.
- Protimax is Well balanced, high quality protein and amino acid supplement.
- Protimax increases utilizable protein levels of feed by effectively correcting amino acid deficiencies.





VITALYTE-B

Electrolyte & Vitamin B Group

COMPOSITION: (PER Kg.)

Vitamin B1	: 3000 mg
Vitamin B2	: 3000 mg
Vitamin B6	: 500 mg
Vitamin B12	: 15 mcg
Vitamin E	: 3500 mg
Choline chloride	: 7200 mg
Folic acid	: 816 mg
Inositol	: 8000 mg
Calcium	: 88000 mg
Magnesium	: 12500 mg
Phosphorus	: 44000 mg
Potassium	: 12500 mg
Sodium	: 120,000 mg
Excipients	: Q.S.

DOSAGE:

- Heavy work / endurance 30-60g daily (depending on temperature, humidity, sweating rate), also advisable to supply and additional 30g VITALYTE-B in evening feed after hard work.
- Travelling horses 60-90g prior to journey in addition to 30g in water during transportation.
- Stallions (during breeding season) 30g daily.
- Yearlings (sale preparations) 30g daily.
(or) as advised by a veterinarian
(or) equinespecialist depending up on animals requirement.

Presentation: 20 kg.

BENEFITS :

- VITALYTE-B is a source of ELECTROLYTES / BODY TONICS / SALT LICKS Supplies a concentrated all critical electrolytes. Maintains optimal body fluid balance, nerve and muscle function.
- VITALYTE-B supplies potent anti-oxidants essential for optimum peak performance and recovery.
- VITALYTE-B is a ideal for intense work, exercise, travelling, endurance or supplementation.
- VITALYTE-B flexible use and daily supplementation as a feed or water additive or as a pre saline drench.
- It Provides all essential elements necessary for efficient energy conversion from carbohydrates, proteins and fats.
- It rectifies B-Group Vitamin deficiencies, common in high grain/energy dense diets.
- VITALYTE-B reduces dehydration, muscle fatigue, cramping, poor performance and delayed recovery following exercise.
- Acts as an antioxidant reduces tissue damage & maintains cell integrity during strenuous work.



OXYGENER

Herbal Respiratory Stimulant for Horses

Composition: Each ltr contains:

Eucalyptus globulus (Eucalyptus extract)	: 5000 mg
Trychyspermum ammi (Thyme oil)	: 5000 mg
Mentha piperita (Menthol)	: 10000 mg
Ginger officinalis (Ginger oil)	: 2500 mg
Allium sativum (Garlic oil)	: 150 mg
Cinnamomum camphora (Camphor)	: 350 mg
Emblica officianalis extract	: 5000 mg
Excipients	: Q.S.

Benefits:

- Reduces the coughing and respiratory irritation.
- Makes breathing easier.
- Enhances mucus secretion.
- Improves immunity and general health.
- Highly useful during respiratory infections.
- Acts as a supportive therapy in all respiratory diseases for rapid recovery.
- Improves Performance in racing horses.

Dosage:

Horses (adult) :
30 ml / animal daily for 5 days.
Foals & small horses :
10-15 ml / animal for 5 days.
(or) as advised by an equine specialist.

Presentation: 5 ltrs.



HAEMAX

Blood Booster

Composition :

Each 5 ml. contains

Vitamin B12	: 9 mcg.
Vitamin B6	: 2 mg.
Folic Acid	: 0.5 mg.
Ferric Pyrophosphate	: 100 mg.
Sorbitol Solution	: 4.4 ml.
(eq. to not less than 73% D-Sorbitol)	
Excipients	: Q.S.

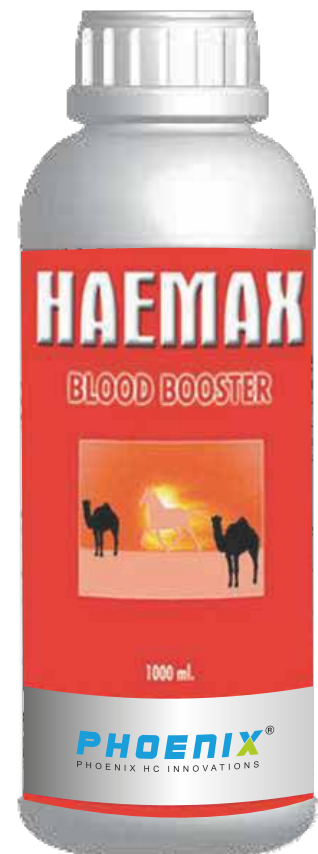
Advantages :

- Improves blood quantity as well as quality.
- Improves strength of the animals.
- Increases blood hemoglobin content.

Dosage :

Large animal : 50 ml./animal / day
Small animal : 10-20 ml./animal / day
(or) as advised by a veterinarian.

Presentation: 1 Ltr.



ACICURE

Acidifier & Conditioner

Composition :

Each 500 gm. contains	
Alakaline magnesium carbonate	: 20.0 gm.
Sodium Propionate	: 50.0 gm.
Cobalt sulphate	: 0.040 gm.
Copper sulphate	: 0.150 gm.
Manganese sulphate	: 0.200 gm.
Ferrous sulphate	: 0.300 gm.
Zinc sulphate	: 0.010 gm.
Gelatin powdered	: 29.30 gm.
Calcium Carbonate upto	: 500 gms.

Advantages :

- Improves comfort in the gut.
- Reduces gas formation in the stomach.
- Improves the health.
- Improves the strength.

Dosage : 7-10 days each time

Large animals : 50-60 gms. / animal / day

Small animals : 10-20 gms. / animal / day
(or) as advised by a veterinarian.

Presentation: 500 gm.



HORSE-LAX

MgSO4 - Laxative & Purgative for Horses

Composition: Each kg. contains

Magnesium sulphate	: 98% (Purity)
Excipients	: Q.S.

Benefits

- Best Laxative
- Best Purgative
- No side effects
- Relieves from stress

Dosage: Oral administration

For both large and small animals.

As a Laxative : 1 gm/kg. of body weight

As a Purgative : 2 gm/ kg. of body weight
(or) as advised by a veterinarian.

Presentation: 500 gm tin



DIGESTER

Antacid Remedy for Horses & Camels

Composition : Each 320 gm contains:

Calcium Carbonate	: 220 gm
Propionic acid (as sodium)	: 38.55 gm
Alcaline magnesium carbonate	: 20 gm
Sod. Hydrogen phosphate	: 10 gm
Gentian root	: 19.3 gm
Cobalt sulphate	: 0.04 gm
Copper sulfate anhydrous	: 0.15 gm
Manganese sulfate anhydrous	: 0.2 gm
Ferrous sulfate anhydrous	: 0.8 gm
Zinc sulfate anhydrous	: 0.01 gm
Excipients	: Q.S.

Benefits:

- Improves appetite
- Improves digestion
- Improves condition of digestive tract
- Reduces stress

Dosage : Oral administration

Large animals : 50-60 gm/ animal / day for 7-10 days

Small animals : 10-20 gm / animal / day for 7-10 days

Presentation: 320 gm pouch



HORSE-LYTE (water soluble)

Electrolytes with Vitamin C – Specially for Horses & Camels

Composition: Each 100 gm contains

Calcium Chloride	: 3.84 gm
Magnesium Sulfate	: 640 mg
Phosphate Sodium Citrate	: 3.66 gm
Potassium Chloride	: 20.32 gm
Sodium Chloride	: 7.76 gm
Sodium Citrate	: 1880 mg
Sodium Phosphate	: 10 gm
Ascorbic Acid	: 900 mg
Glucose	: 13.28 mg
Excipients	: Q.S.



Benefits:

- It is special electrolyte supplement with vitamin C for horses & camels to maintain proper electrolyte balance in the body
- It is an aid in the treatment of electrolyte imbalance in horses & camels
- Highly recommended during racing, training travelling or hot weather, and in cases of gastroenteritis and diarrhea.
- Highly useful in the cases of dehydration, heat exhaustion, cramp and fatigue etc.

DOSAGE: Oral administration

Horses and Camels:

As a daily supplement : 100 gm through drinking water or feed.

Pre-race or show routine: 200 gm daily through drinking water or feed for 3 - 4 days before the race.

Hot weather routine : 200 gm daily through drinking water .

To achieve recovery from hard training, racing, exercise etc.: 200 gm in single dose.

Note: 100 gm powder dissolve in 500- 1000 ml drinking water

Presentation: 100 gm pouch & 1 Kg tin





LIV SPARK

Hepato-Protective and Liver Tonic

Composition: (Each Litre)

Methionine	: 50,000 mg
Choline	: 20,000 mg
Nicotinic Acid	: 8,000 mg
Vitamin B1	: 5,000 mg
Vitamin B2	: 2,000 mg
Vitamin B6	: 1,000 mg
Vitamin B12	: 5,000 mcg
Biotin	: 750 mg
Vitamin E	: 10,000 mg
Vitamin C	: 1,000 mg
Vitamin K3	: 2000 mg
Inositol	: 1,000 mg
Carnitine	: 15,000 mg
Excipients	: Q.S



Indications:

- Improves liver function and helps for better digestion.
- Corrects liver disorders like fatty livers.
- Improves feed conversion ratio.
- Increases growth and body weight.
- Maintains optimum health and immunity.
- Highly useful during antibiotic treatments.

Dosage and Instructions:

Horses: Feed 60ml daily for 14 days for horses in recovery.
Routinely feed 5 days every month to high performance horses.

Presentation: 1 Ltr.



W e c a r e f o r A n i m a l H e a l t h & W e l l n e s s

LACTO PLUS

DIRECT FEED MICROBIAL PROBIOTIC FEED ADDITIVES

Composition: Each kg contains:

Lactobacillus acidophilus
 Lactobacillus casei
 Lactobacillus lactis
 Lactobacillus reuteri
 Lactobacillus rhamnosus
 Lactobacillus plantarum
 Bacillus subtilis
 Bacillus coagulans
 Streptococcus faecium
 Saccharomyces boulardii
 Saccharomyces cerevisiae
 Excipients : Kaolin with carrier
 (Probiotics Strength : 500 billion cfu/Kg)



BENEFITS:

- It is high concentrated probiotic feed additive to enhance performances in horses, it maintains beneficial bacteria in the gut for better health.
- Probiotics work by reintroducing good bacteria to horse's gut, as well as helping them absorb key nutrients and improve their overall digestion.
- Improves immunity & disease resistance power.
- Acts as a as a remedy in a various digestive problems like chronic diarrhoea, ulcers etc. in horses.
- It helps to reduce stress and recovers from injuries or illnesses which caused by an imbalance in horse's intestinal flora.
- During travelling horses are prone to drinking and eating less, a probiotic can serve as a preventative against stress and reduce the chances of colic.
- Horses with a history of colic can also benefit by using probiotics as a preventative measure.
- Usage of antibiotics, can affect horse's digestive system by depleting both the good and bad bacteria in their gut, hence it reintroduces good bacteria and bring balance back to their gut's environment.
- It helps to improve overall general health and performances in horses

DOSAGE: : Add in feed:

Horses (adults) : 30 to 40 gm/animal for 5-7 days
Foals & small horses : 20 gm/animal for 5-7 days
 (Or) as advised by a equine specialist

PACK: 1kg tin & 25 kg drum.



W e c a r e f o r A n i m a l H e a l t h & W e l l n e s s



CRAMP CARE

Citrate Based Buffer to Prevent Muscle Cramps

Composition : (Each Liter contains)

- Vitamin C : 5,000mg
- Vitamin E : 10,000mg
- Vitamin B1 : 5,000mg
- Sodium Citrate : 310,000mg
- Citric Acid : 105,000mg

Dosage:

- Feeding instructions (Through feed)
- Horses in training: 90ml per day in evening feed
- After competition or hard work: Feed 120ml (or)As advised by a veterinarian

Benefits:

- Reduces accumulation of lactic acid in the blood & muscles which cause muscle stiffness, muscle cramping (stiffness) and damage to the muscle fibres.
- Citric acid neutralizes lactic acid build up in the body.
- Help to prepare the horse for regular exercise.
- CRAMP CARE is an excellent Antioxidant.
- Maintains buffer (Acid Base Balance) in the body.

Presentation: 1 Ltr.



W e c a r e f o r A n i m a l H e a l t h & W e l l n e s s

COPPER Plus (Liquid)

Chelated Copper supplement with
Vitamins E, B12 , Biotin & Manganese

Composition: Each ltr. contains:

Copper	: 6000 mg
Manganese	: 3000 mg
Vitamin B12	: 900 µg
Vitamin E	: 15000 mg
Biotin	: 6100 µg

Benefits:

- Chelated Copper required for the healthy development and integrity of connective tissue
- Chelated Manganese – involved in the synthesis of chondroitin sulphate & therefore important for healthy joints
- Vitamin B12 promotes red blood cell formation
- Vitamin E plays role as a key antioxidant
- Biotin is important to maintain hoof
- It improves bone strength and overall growth in foals
- Improves performances in exercising & racing horses
- Helps to improve fertility in mares
- Highly useful in training and showing horses

Dosage: Oral administration:

Adult Horses (450 to 600 kg body weight) : 30 ml

Yearlings (200 to 350 kg body weight) : 15 ml

Foals (below 200 kg) : 10 ml



Presentation: 1 ltr. bottle & 5 ltr. can



RESPOIL (Liquid)

Herbal Syrup with Honey & Vitamin C -
To improve Respiratory Health

Composition: Each ltr.. contains:

Vitamin C (ascorbic acid)	: 12000 mg
Honey	: Q.S.
Thyme & Eucalyptus oil	: Q.S.
Excipients	: Q.S.

Benefits:

- Helps to strengthen respiratory system and improves its functions
- Highly recommended during respiratory distress/diseases
- Vitamin C helps to improve immunity & promotes healing
- Honey acts as a natural soothing agent
- Thyme & Eucalyptus oil helps to improve respiratory system

Dosage: Oral administration:

Horses (below 450 kg body weight) : 60 ml

Horses (250-450 kg body weight) : 45 ml

Horses (below 250 kg body weight) : 30 ml

Note: use strictly under veterinarian supervision

Presentation: 1 ltr. bottle & 5 ltr. can





PERFORMANCE PLUS

Energy Booster Cum Performance Enhancer

Composition: Additives per 60 ml:

Ascorbic acid	: 1,000mg
atocopherol	: 1,500mg
Vitamin D	: 6,600iu
Vitamin A	: 42,000iu
Cyanocobalmin	: 150mcg
Thiamine	
Hydrochloride	: 75mg
Riboflavin	: 60mg
Pyridoxine	
Hydrochloride	: 30mg
Biotin	: 1.5mg
Folic	: 50mg
Menadione	: 20mg
Niacin	: 240mg
Calcium-	
D-Pantothenate	: 60mg
Cupric chelate of	
glycine hydrate	: 2,625mg
Zinc chelate of	
glycine hydrate	: 3,000mg
Ferrous chelate of	
glycine hydrate	: 1,800mg
Potassium Iodide	: 4.8mg
Cobalt Sulphate	: 7.14mg
Sodium Selenite	: 0.88mg
Manganese	
Sulphate	
Monohydrate	: 632mg
OMEGA 3	: 3,600mg

Indications:

Performance Plus can be fed daily as a dietary supplement to horses as a performance booster. It is best to feed 3 days prior to an event or race. High Performance Preparation - 60ml daily for 3 days prior to event or race.

Presentation : 60 ml oral paste tube.





NEW LIFE

Concentrated Source of Natural Vitamin E for Horse

Composition: Each 30ml contains
Vitamin E : 3,000 mg
Excipients : Q.S

Benefits and Indications:

- Protects cells from oxidative damage.
- Improves muscle strength.
- Stabilizes red blood cells and maintain integrity.
- Stabilizes vascular system Immunity.
- Improves fertility and conception rates in mares & sperm production in stallions.

Dosage and Administration:

30 ml (NEW LIFE) can be fed as a dietary vitamin E supplement to horses (Or) as advised by equine specialist.

Presentation: 30 ml oral paste tube.



RESPI PLUS

Oral Respiratory & Immunity Support

Composition: Each 60ml contains
Vitamin C : 1,000mg
Mental oil : 20 mg
Garlic oil : 10 mg
Ginger oil : 2 mg
Eucalyptus oil : 5 mg
Excipients : Q.S

Indications:

- Improves immunity and general health.
- Enhancement of immunity through IgA production in the lung.
- Reduces the coughing and respiratory irritation.
- Makes breathing easier.
- During periods of respiratory or immune stress.
- Improves Performance.

Dosage: (Orally)

Respi Plus can be fed daily as a dietary respiratory support to horses. As a dietary supplement : 20 ml daily

Before transportation to a race/event: 60 ml for 2 days prior

Packaging: 60 ml oral paste tube.



W e c a r e f o r A n i m a l H e a l t h & W e l l n e s s

HORSE-CALM

Nutritional Tonic for Nervous Horses

Composition : Each ltr. contains:

Vitamin B12	: 479 mg
Vitamin B6	: 826 mg
Vitamin B12	: 2149 µg
Nicotinic Acid	: 1653 mg
Tryptophan	: 33058 mg
Magnesium	: 2000 mg
Excipients	: Q.S.



Benefits:

- Acts as a non-drowsy and calming tonic
- Can be used daily or in special situations during competition for ease of travelling stress
- Useful in all horses prone to nervousness
- Helps in relaxation during show time, sales preparation etc.
- B vitamins to aid the central nervous system
- Magnesium useful for muscle relaxation, regulating cardiac rhythm and nerve signaling
- L-Tryptophan is an essential amino acid and a precursor to Serotonin. Serotonin is a neurotransmitter associated with inhibition of fear or stress

Dosage : Oral administration through feed

Horses (450-600 kg body weight) : 50 ml for 7-10 days

Horses (300-450 kg body weight) : 25 ml for 7-10 days

Note: use strictly under veterinarian supervision

Presentation: 1 ltr. & 5 ltr.



W e c a r e f o r A n i m a l H e a l t h & W e l l n e s s

COOL-GEL (External application)

External Applicant Gel - Coolent & Relaxant

Composition: Each 100 ml. contains

Camphor	: 0.89%
Menthol	: 0.80%
Eucalyptus oil	: 0.45%
Excipients	: Q.S.

Benefits:

- Special herbal gel for external application to relieve animals from muscle and joint pains
- Relieves from pains tendons.
- Relaxes the muscles.
- Provides cooling and comfort to the animals.

Dosage: External Application

Foment the affected areas with hot water, later on rub the same areas with gel

(Or) as advised by a Veterinarian

Presentation: 1 Ltr.



HOOF-SHINE Oil

To Improve Hoof Health and Shine (External application)

Composition: Each ltr. contains:

High quality hoof oil containing natural oils and Stockholm Tar

Benefits:

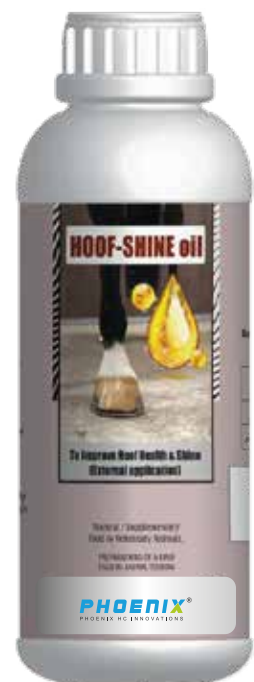
- Regular application of oil improves hoof strength
- Keeps horse hooves healthy and strong
- To make hooves shiny- useful in show horses

Dosage: External application:

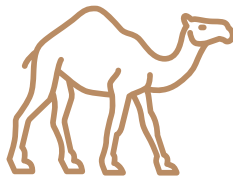
Apply to hooves directly using a soft bristle brush.

(Or) as advised by a Veterinarian

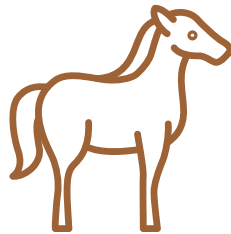
Presentation: 1 ltr. bottle & 5 ltr. can



THERAPEUTIC SEGMENT



Camel



Equine



We care for Animal Health & Wellness



MELOXICAM

Oral Suspension

Composition:

Each ml of oral suspension contains
Meloxicam IP 1.5 mg
Excipients q. s.

Indication / Uses:

- Arthritis and osteoarthritis
- Other musculoskeletal disorders
- Otitis and dermatitis
- Perioperative infections

Dosage and administration:

Meloxicam @ 0.2 mg/kg bodyweight on the first day i.e. 1ml/ 7 kg bodyweight

For maintenance @ 0.1 mg/kg bodyweight i.e. 1ml/ 15 kg bodyweight.
Usually given at 24 hours interval. (Or) as advised by a Veterinarian

Route of Administration: It is for oral administration only and can be mixed with the food. Should not be given an empty stomach.
Species: Dogs, Camel, Cattle, Horse, Goats

Side effects / Contraindications /Warnings:

- Overdose may result in serious side effects and GI signs like vomiting or hematemesis, diarrhoea, faecal occult blood/melena, dark or tarry stools, loss of appetite.
- Do not use in dogs having bleeding disorders, gastrointestinal, renal or hepatic issues. Patients that are on diuretic therapy or dehydrated are at greater risk of renal toxicity.
- Do not use meloxicam in combination with steroids or other NSAIDs, aminoglycoside antibiotics and anti-coagulant agents.
- Do not give an empty stomach.
- Self-medication may result in serious complications and side effects. Even maybe lethal for your pet. Always consult your veterinarian before starting medication.
- Meloxicam can cause acute renal failure and death if used repeatedly.
- Additional injectable or oral meloxicam administration should be avoided in cats.

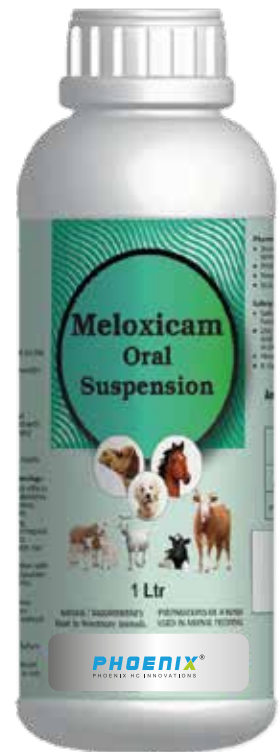
Pharmaceutical precautions / Instructions:

- Store in a cool and dry place at room temperature or below 25°C.
- Protect from light.
- Keep out of reach and sight of children.
- Strictly for veterinary use.

Safety: Age / Pregnancy/ Withdrawal:

- Safety for breeding and lactating animals have not been instructed.
- Use in animals less than 6 weeks of age and less than 4 kg body weight is warned as per literature.
- Always follow recommended dose.
- It has no reported withdrawal side effects.

Packing: 50ml, 100ml, 250 ml, 500 ml, 1 Ltr 5 Ltr



W e c a r e f o r A n i m a l H e a l t h & W e l l n e s s

ULCEREX EQUINE

Omeprazole Veterinary Oral Paste-37%

Composition: Each gm contains:
Omeprazole USP : 370 mg
Excipients : Q. S.

Indications:

For treatment and prevention of recurrence of gastric ulcers in horses and foals 4 weeks of age and older.

Dosage:

- For treatment of gastric ulcers, it should be administered orally once-a-day for 4 weeks at the recommended dosage of 1.8 mg omeprazole/lb body weight (4 mg/kg).
- For the prevention of recurrence of gastric ulcers, continue treatment for at least an additional 4 weeks by administering this paste at the recommended daily maintenance dose of 0.9 mg/lb (2 mg/kg).

Note: Use syringe plunger for proper dosing in horses (Or) as advised by a veterinarian/equine specialist

Precautions: The safety of “ULCEREX-EQUINE” has not been determined in pregnant or lactating mares.

Warning:

Do not use in horses intended for human consumption. Keep this and all drugs out of the reach of children. In case of ingestion, contact a physician. Physicians may contact a poison control centre for advice concerning accidental ingestion.

Pack: One syringe of 6.15 gm.





MOXIDECTIN & PRAZIQUANTEL

Veterinary Oral Gel

Composition: Each ml Contains
Moxidectin BP : 20 mg
Praziquantel IP : 125 mg
Excipients : q. s.

Indications:

Effective in the treatment and control of the following stages of gastrointestinal parasites in horses and ponies:

Large Strongyles:

Strongylus vulgaris – (adults and L4/L5 arterial stages)
Strongylus

edentatus – (adults and tissue stages) *Triodontophorus brevicauda* – (adults) *Triodontophorus serratus* – (adults)

Small Strongyles (adults):

Cyathostomum spp., including *Cyathostomum catinatum*
Cyathostomum pateratum *Cylicostephanus* spp., including
Cylicostephanus calicatus *Cylicostephanus goldi*
Cylicostephanus longibursatus *Cylicostephanus minutus*
Cylicocyclus spp., including *Cylicocyclus insigne* *Cylicocyclus leptostomum* *Cylicocyclus nassatus* *Cylicocyclus radiatus*
Coronocyclus
spp., including *Coronocyclus coronatus* *Coronocyclus labiatus*
Coronocyclus labratus *Gyalocephalus capitatus* *Petrovinema poculatus*

Small Strongyles:

Undifferentiated luminal larvae

Encysted cyathostomes: Late L3 and L4 mucosal cyathostome larvae
Ascarids: *Parascaris equorum* – (adults and L4 larval stages)

Pinworms: *Oxyuris equi* – (adults and L4 larval stages)

Hairworms: *Trichostrongylus axei* – (adults)

Large-mouth stomach worms: *Habronema muscae* – (adults)

Horse stomach bots: *Gasterophilus intestinalis* – (2nd and 3rd instars)
Gasterophilus nasalis – (3rd instars)

Tapeworms: *Anoplocephala perfoliata* – (adults)

One administration of the recommended dose rate, suppresses strongyle egg production through 84 days.

Administration and Dosage:

It is specially formulated as a palatable gel which is easily administered to horses and ponies. It is packaged in ready-to use syringes. The syringe is calibrated in 50-pound increments, up to 1250 pounds. This enables the administration of the recommended dose level by choosing a setting consistent with the animal's weight.

Precautions:

It is formulated specifically for use in horses and ponies only. This product should not be used in other animal species as severe adverse reactions, including fatalities in dogs, may result.

Warning:

Extreme caution should be used when administering the product to foals, young and miniature horses, as overdose may result in serious adverse reactions. Do not use in sick, debilitated, or underweight animals. Do not use in horses intended for human consumption.

Packing: Syringe of 11.6 gm





MOXIDECTIN

Veterinary Oral Gel-2%

Composition: Each ml Contains

Moxidectin IP : 20 mg

Excipients : q.s.

Indications:

Effective in the treatment and control of the following stages of

gastrointestinal parasites in horses and ponies:

Large Strongyles: *Strongylus vulgaris* – (adults and L4 / L5 arterial stages) *Strongylus edentatus* – (adults and tissue stages) *Triodontophorus brevicauda* – (adults) *Triodontophorus serratus* – (adults)

Small Strongyles (adults): *Cyathostomum* spp., including *Cyathostomum catinatum* *Cyathostomum pateratum* *Cylicostephanus* spp., including *Cylicostephanus calicatus* *Cylicostephanus goldi* *Cylicostephanus longibursatus* *Cylicostephanus minutus* *Cylicocyclus* spp., including *Cylicocyclus insigne* *Cylicocyclus leptostomum* *Cylicocyclus nassatus* *Cylicocyclus radiatus* *Coronocyclus* spp., including *Coronocyclus coronatus* *Coronocyclus labiatus* *Coronocyclus labratus* *Gyalocephalus capitatus* *Petrovinema poculatus*

Small Strongyles: Undifferentiated luminal larvae

Encysted cyathostomes: Late L3 and L4 mucosal cyathostome larvae **Ascarids:** *Parascaris equorum* – (adults and L4 larval stages)

Pinworms: *Oxyuris equi* – (adults and L4 larval stages)

Hairworms: *Trichostrongylus axei* – (adults)

Large-mouth stomach worms: *Habronema muscae* – (adults)

Horse stomach bots: *Gasterophilus intestinalis* – (2nd and 3rd instars) *Gasterophilus nasalis* – (3rd instars)

It is indicated for use in horses and ponies, including breeding mares and stallions, and foals six months of age and older.

Administration and Dosage:

- It is specially formulated as a palatable gel which is easily administered to horses and ponies.
- It is packaged in ready-to-use syringes. The syringe is calibrated in 50-pound increments, up to 1500 pounds. This enables the administration of the recommended dose level of 0.4 mg moxidectin/kg body weight by choosing a setting consistent with the animal's weight.
- Do not underdose. Ensure each animal receives a complete dose based on a current live body weight. Underdosing may result in ineffective treatment, and encourage the development of parasite resistance.

Precautions:

It is formulated specifically for use in horses and ponies only. This product should not be used in other animal species as severe adverse reactions, including fatalities in dogs, may result.

Warning:

Extreme caution should be used when administering the product to foals, young and miniature horses, as over dosage may result in serious adverse reactions. Do not use in sick, debilitated, or underweight animals. Do not use in horses intended for human consumption.

Packing: Syringe of 14.4 gm.





IVERMECTIN & PRAZIQUANTEL

Veterinary Oral Paste

Composition: Each gm contains:

Ivermectin IP : 18.7 mg
Praziquantel IP : 140.3 mg

Indications:

It is indicated for the treatment and control of the following parasites:

Tapeworms Anoplocephala perfoliata

Large Strongyles (adults) Strongylus vulgaris (also early forms in blood vessels) S. edentatus (also tissue stages) S. equinus
Triodontophorus spp.

Small Strongyles (adults, including those resistant to some benzimidazole class compounds) Cyathostomum spp.
Cylicocyclus spp. Cylicostephanus spp. Cylicodontophorus spp.

Small Strongyles (fourth-stage larvae)

Pinworms (adults and fourth-stage larvae) Oxyuris equi

Ascarids (adults and third- and fourth-stage larvae) Parascaris equorum

Hairworms (adults) Trichostrongylus axei

Large-mouth Stomach Worms (adults) Habronema muscae

Bots (oral and gastric stages) Gasterophilus spp.

Lungworms (adults and fourth-stage larvae) Dictyocaulus arnfieldi

Intestinal Threadworms (adults) Strongyloides westeri

Summer Sores caused by Habronema and Draschia spp. cutaneous third-stage larvae

Dermatitis caused by Neck

Threadworm microfilariae, Onchocerca sp.

Dosage and Administration:

This syringe contains sufficient paste to treat one 1320-lb horse at the recommended dose rate of 91 mcg ivermectin per lb (200 mcg/kg) and 0.68 mg praziquantel per lb (1.5 mg/kg) of body weight. Each weight marking on the syringe plunger delivers enough paste to treat 220 lb (100 kg) of body weight.

Animal safety:

It may be used in horses 4 weeks of age and older. Stallions and breeding, pregnant or lactating mares may be treated without adverse effects on fertility.

Precautions:

It has been formulated specifically for use in horses and ponies only. This product should not be used in other animal species as severe adverse reactions, including fatalities in dogs, may result.

Warning: Do not use in horses intended for human consumption.

Environmental warning: Ivermectin and excreted ivermectin residues may adversely affect aquatic organisms. Do not contaminate ground or surface water. Dispose of the syringe in an approved landfill or by incineration.

Storage: Store at room temperature (25°C/77°F), with excursions permitted between 15°–30°C (59°–86°F).

Pack: One syringe of 6.42 gm.



IVERMECTIN

Veterinary Oral Paste

Composition: Each ml Contains
Ivermectin IP : 1.87% w/w
Excipients : q. s.

Indications:

Horses - For the treatment of the following parasites:

Large strongyles (adults and arterial larval stages of *Strongylus vulgaris*; adults of *S. edentatus* and adults of *S. equinus*).

Small strongyles (adults and immature (luminal stage)) including benzimidazole resistant strains. *Parascaris equorum* (immature and adult) *Oxyuris equi* (immature and adult) *Gasterophilus* spp. (oral and gastric stages of bots) *Microfilariae* of *Onchocerca cervicalis*

Dosage and administration:

Dosage: One syringe division of paste per 100 kg body weight (based on a recommended dosage of 200 µg ivermectin per kg body weight). The total contents of a syringe (six divisions) will dose one 600 kg horse.

Administration: The paste is given by oral route. The syringe should be inserted at the interdental space and the paste deposited on the base of the tongue. The product can be administered to mares at any stages of pregnancy or lactation. The product can be used in breeding mares and stallions and will not affect fertility. The product can be given to all ages of animals including young foals. Withdrawal period Edible tissues: 21days after the last treatment.

Operators warning:

- Do not smoke, eat or drink while handling the product.
- Wash hands after use.

Pharmaceutical precautions:

Do not store above 25°C. Protect from direct light. Keep out of reach and sight of children. For animal treatment only. Extremely dangerous to fish and aquatic life. Do not contaminate surface waters or ditches with the product or used container.

Precautionary information:

- There are no known interactions between this product and other medications. Frequent and repeated use of ivermectin may lead to development of resistance. As with all anthelmintics, a veterinary surgeon should establish appropriate dosing programmes and stock management to achieve adequate parasite control and reduce the likelihood of anthelmintic resistance developing.
- In the event of signs of toxicity, discontinue use immediately. Some horses carrying heavy infection of *Onchocerca microfilariae* have experienced oedema and pruritus following dosing, assumed to be the result of death of large numbers of microfilariae. These signs resolve within a few days but symptomatic treatment may be advisable.
- Do not use in horses with known hypersensitivity to the active substance. This product has been formulated specifically for use in horses only.
- Do not administer overdose
- Do not use in dogs or cats as severe adverse reactions may occur.

Container disposal:

Any unused product or waste material should be disposed of in accordance with national requirements.

Packing: Syringe of 6.2 gm.



ALBEN-TB

Triclabendazole & Albendazole Veterinary Oral Suspension

Composition: Each ml Contains

Triclabendazole : 120 mg
Albendazole BP : 100 mg
Excipients : q. s.

Packing:

100 ml, 250 ml, 500 ml, 1ltr,
5 ltr, 10 ltrs, 20ltr & 50ltr.

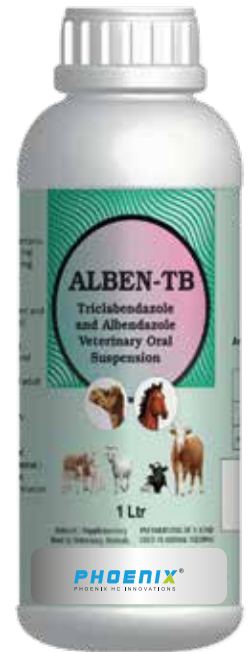
Indications:

Indicated for the treatment and simultaneous control of all internal parasitosis (gastrointestinal and lung nematodes, tapeworms and Fasciola hepatica (early immature, immature and adult stages).

Dosage and Administration:

Oral administration

Cattle : 5 ml/50 kg of body weight
Sheep, goats, camels and horses : 1 ml/10 kg of body weight
(Or) as advised by a veterinarian



PRAZI-CO

Praziquantel, Cobalt Sulphate Veterinary Oral Suspension.

Composition: Each ml Contains

Praziquantel BP : 100 mg
Cobalt Sulphate : 16 mg
Excipients : Q. S.

Packing: 100 ml, 250 ml, 500 ml, 1ltr,
5 ltr, 10 ltr, 20ltr & 50ltr.

Indications

- For the simultaneous treatment and control of all taeniasis.
- It contains praziquantel, the most powerful taenicide, and includes the microelement cobalt in its formula, which offers a direct action in preventing anemia.

Dosage and Administration:

Oral administration **Cattle, Sheep and Goat** : 10 ml/100 kg body weight
Camels : 1 ml/20 kg body weight
Horses : 1 ml/33 kg body weight
Dogs and Cats : 1 ml/20 kg body weight
(Or) as advised by a Veterinarian





WORM FINISH

**Triclabendazole, Praziquantel,
Fenbendazole & Ivermectin
Veterinary Oral Suspension.**

Composition: Each ml Contains
Triclabendazole : 120 mg
Fenbendazole BP : 50 mg
Praziquantel BP : 100 mg
Ivermectin BP : 2 mg
Excipients : q. s.

Indications

- For the control of internal and external parasitosis. Its spectrum includes gastrointestinal and pulmonary nematodes and *Fasciola hepatica* (early immature, immature and adult stages).
- The action of fenbendazole and praziquantel broadens the spectrum to taenias. Due to the action of ivermectin, the spectrum also includes ectoparasites like scabies mites, sucking lice, larvae of flies causing myiasis. and ticks, among others.

Dosage and Administration: Oral administration

Cattle : 5 ml/50 kg of body weight

Sheep, Goats and camels : 1 ml/10 kg of body weight
(Or) as advised by a veterinarian

Packing: Bottle x 500 ml, 1 Ltr, 10 Ltr, 25 Ltr, 50 Ltr.



TRIMECT-FB

Triclabendazole, Fenbendazole & Ivermectin Veterinary Oral Suspension.

Composition: Each ml Contains

Triclabendazole : 50 mg
Fenbendazole BP : 50 mg
Ivermectin BP : 1 mg
Excipients : q. s.

Indications

For the simultaneous treatment and control of all internal parasitosis (gastrointestinal and pulmonary nematodes, including cases of acute, subacute and chronic fascioliasis, taenias and nematodes resistant to benzimidazoles and ivermectin), as well as for the treatment and control of sucking ectoparasites (and helping also in the control of flies).

Dosage and Administration: Oral administration

Cattle and horses : 10 ml/50 kg of body weight
Sheep, goats and camels : 2 ml/10 kg of body weight
(Or) as advised by a veterinarian

Packing: 100 ml, 250 ml, 500 ml, 1ltr, 5 ltr, 10 ltr, 20ltr & 50ltr





GENTOX-DS

Doxycycline and Gentamicin Sulphate Veterinary Oral Powder

COMPOSITION:

Each gm contains:
 Doxycycline Hyclate BP Equivalent to Doxycycline : 200 mg
 Gentamicin Sulphate BP : 200 mg
 Excipients : Q.S.

DESCRIPTION:

Doxycycline is a semi-synthetic broad-spectrum antibiotic from tetracycline class, active against both aerobic and anaerobic rampositive and Gram-negative bacteria: Staphylococcus spp., Haemophilus spp., E. coli, Pasteurella spp., Bacillus anthracis, some Clostridium spp, Actinomyces spp., Brucella spp., Salmonella spp., also against Mycoplasma spp., Rickettsia spp. and Chlamydia spp. Gentamycin is a bactericidal aminoglycoside active against most gramnegative aerobic rods and some gram-positive bacteria: Enterobacter spp., E. coli, Salmonella spp., Brucella spp., Haemophilus spp., Pasteurella spp., most strains of Treponema spp. strains etc. When combined, doxycycline and gentamicin can act synergistically.

INDICATIONS:

Treatment of infections caused by microorganisms susceptible to doxycycline and/or gentamycin in calves, sheep, goats, pigs, poultry and horses. The product is especially indicated in gastrointestinal and respiratory tract infections. Large animals: pasteurellosis, actynobacillosis, neonatal colibacillosis, brucellosis, pneumonia, enteritis, anaplasmosis, mycoplasmosis, proliferative adenomatosis, septicemia etc. Poultry: colibacillosis, psittacosis, chronic respiratory diseases (synovitis, coryza), pasteurellosis (fowl cholera) etc.

CONTRAINDICATIONS:

Hypersensitivity to aminoglycosides and/or tetracyclines. Animals with impaired renal or hepatic function, animals with vestibular or ear dysfunctions or animals with an active microbial digestion.

DOSAGE:

For oral administration in drinking water or via feed.

Calves, sheep, goats and horses: 2.5 gm per 100 kg body weight, once or twice daily, as required for 3-5 days.

Swine: 2.5 gm per 100 kg body weight, once or twice daily, as required, for 3-5 days

Poultry: 375 gm per 1000 liters of drinking water, daily, for 3-5 days. (Or) As advised by the veterinarian.

NOTE: Medicated feed should be used immediately.

SIDE EFFECTS: Hyper sensibility reactions, rarely gastrointestinal disturbances. Tetracyclines (doxycycline) may cause discoloration of bones and teeth to a yellow, brown or grey colour. In extreme overdosages nephrotoxicity, ototoxicity or neurotoxicity symptoms could occur.

WITHDRAWAL PERIOD:

- Meat: 14 days (large animals) and 7 days (poultry)
- Do not use in lactating animals producing milk and laying hens producing eggs for human consumption.

PACKINGS: 100 gm, 250 gm, 500 gm, 1Kg, 5 kg, 10 Kg, 25 Kg & 50 Kg.



W e c a r e f o r A n i m a l H e a l t h & W e l l n e s s



EQUINE

Stable mats

Horse stable mats, also known as stall mats or stall flooring, serve several important purposes in equine facilities. Here are some common uses of horse stable mats:

- 1. Comfort:** Stable mats provide a cushioned and comfortable surface for horses to stand, lie down, and move around in their stalls. The rubber or foam material of the mats helps alleviate pressure on the horse's joints and hooves, reducing fatigue and discomfort.
- 2. Protection:** Stable mats protect the underlying stall flooring (such as concrete or dirt) from damage caused by hooves, urine, and manure. They create a durable barrier that absorbs impact and prevents wear and tear, extending the lifespan of the stall flooring and reducing maintenance costs.
- 3. Insulation:** Stable mats provide thermal insulation, helping to regulate temperature and keep the stall warmer in cold weather. The insulating properties of the mats help prevent heat loss through the floor, creating a more comfortable environment for the horse during colder months.
- 4. Hygiene:** Stable mats create a smooth, non-porous surface that is easy to clean and disinfect. They help reduce the accumulation of dirt, debris, and moisture in the stall, minimizing the risk of bacterial growth, odors, and hoof-related infections. Regular cleaning of stable mats promotes a cleaner and healthier living environment for the horse.
- 5. Safety:** Stable mats provide traction and stability, reducing the risk of slips, falls, and injuries for horses as they move around their stalls. The textured surface of the mats helps improve grip and footing, especially in wet or slippery conditions, enhancing safety for both horses and handlers.
- 6. Noise Reduction:** Stable mats dampen sound and vibrations, creating a quieter and more peaceful environment in the stable. This can help reduce stress and anxiety in horses, particularly those sensitive to loud noises or sudden disturbances.
- 7. Convenience:** Stable mats streamline stall maintenance and management, making it easier and more efficient to clean and maintain the stable. They eliminate the need for bedding materials such as straw or shavings, reducing labor and material costs associated with stall bedding.

Overall, horse stable mats offer numerous benefits in terms of comfort, protection, hygiene, safety, and convenience for both horses and their caretakers. Investing in high-quality stable mats can contribute to the overall well-being and performance of horses while promoting efficient and sustainable stable management practices.



INTERNATIONAL PRESENCE

Phoenix Healthcare Private Limited

150 Imperial Court Exchange St.East
Liverpool - L23AB United Kingdom

Phoenix HC Innovations

(Authorized Representative)
#51, Zone-27, Street 310
Doha - Qatar

Phoenix Healthcare Systems Inc

#120 Rogers Office Building Edwin Wallace
Rey Drive George Hill Anguilla
British West Indies

Phoenix Healthcare Private Limited

501 Silver Side Road Wilmington
New Castle Delaware 19809 U.S.A

Phoenix HC Innovations

#C 201 Vijay Raja Century Court
Vilalge NO: 9 Melurkuppam Main Road
Padur Thiruvalluvar District - 600124 Tamil Nadu INDIA

Phoenix 369 General Trading FZC

Sharjah research technology and Innovation park
Address: Block B - B32- 161
Sharjah UAE

Customer Care: +91 9884070652 • +91 9884003521 • 91 -9176533300

E-mail: mail@phci.in

Web: www.phci.in

